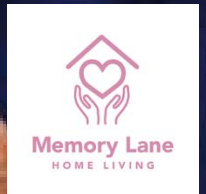


# Changing Seasons: Finding Grace in Dementia



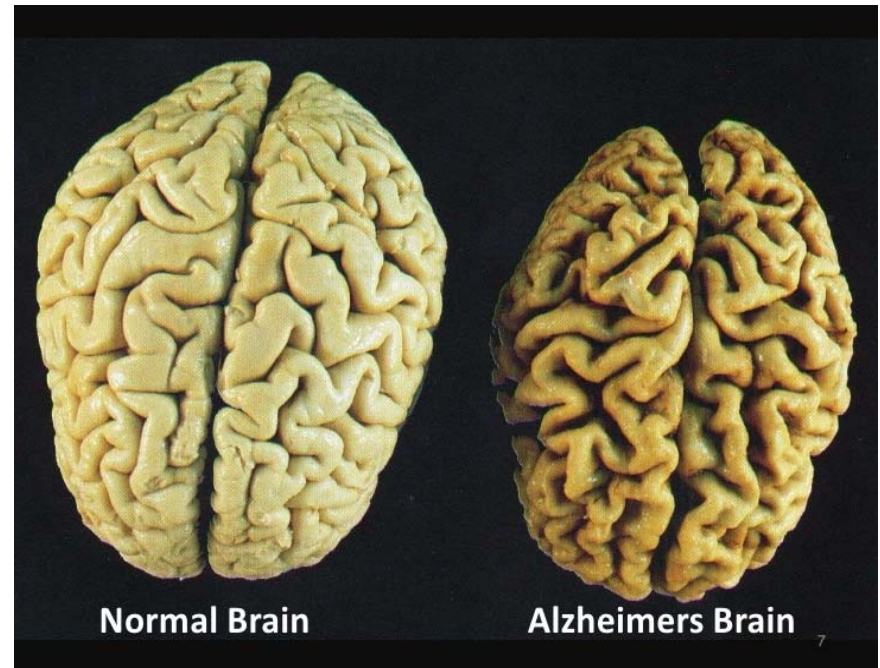
# Dementia

## What is it?

Dementia is a disease of the brain with individuals over 65 being most susceptible. The most common type is Alzheimer's.

## What are some symptoms?

- Loss of memory
- Loss of judgement and reasoning
- Change in mood and behavior





# Traditional Model – Home Environment

- Ontario Government support in place for one to two hours/day (approximately \$1,000/month)
- Who helps out with the other 22 hours/day?
- Loneliness/isolation of senior and caregiver
- Wait lists for social day programs



# Traditional Model – Retirement Home

- Monitored by the Retirement Home Act
- 1 PSW to 16 residents
- Approximately 90 minutes of care per day
- Low staffing ratios do not promote person centered care
- **Assisted living not adequate for seniors with dementia (\$5000/month)**
- **Memory units are the new initiative to provide better care (7,000/month)**



# Traditional Model – Long Term Care (LTC)

- Monitored under the Long Term Care Act
- Medical model of care
- 1 PSW to 10 residents in daytime, fewer at night.
- Long term care costs approximately \$13,000/month (\$7,000 government + \$2,600 resident + \$2,400 for family extra costs)
- 30,000 seniors on wait list for LTC





# Traditional Model Sustainability, A Red Flag

## Emerging Trends

- Cost of Public Care is unsustainable in the current form – need \$1.3 Trillion over the next 15 years – Bean counters tell us they have \$590 Million.

*As relayed to Don Fenn, CEO, OmniMedia by Premier Kathleen Wynne*

- Inefficiencies in care are costing taxpayers more

## Righting the Sinking Ship

- Address your concerns to all levels of government (MP, and MPP). One phone call represents 10,000 voices
- A different care approach can reduce or eliminate the length of time an individual needs long term care.

# Not For Profit Person-Centred Care Homes

- A new model of care imported from Europe
- Modeled after “Freunde alter Menschen e.V. les petits freres des pauvre” in Berlin, Germany and managed by sociologist Klaus Pawletko for the past 20 years.
- Higher quality care over traditional models in Ontario
- Non-medical in approach



Sociologist Klaus Pawletko



# Not For Profit Person-Centred Care Homes

Memory Lane Home Living Inc.  
Richmond Hill, Ontario



# Our Cooperative Model

## For the residents:

- Small familiar environment
- Everyday household activities
- Skilled round-the-clock professionals

## Collaboration in the home:

- Shared use of the house
- Shared household costs
- Shared care costs

## Our role at Memory Lane:

- House rental
- Co-ordination of volunteers
- Support relatives in organizing everyday life and care for their loved ones



# Memory Lane Home Living Principles

## Memory Lane House:

- works to normalize dementia
- works with the families on the dementia journey
- Addresses pillars of the National Seniors Strategy for Canada
- Addresses the goals of the Ontario Dementia Care Strategy



**I've learned that people will forget what you have said, people will forget what you did, but people will never forget how you made them feel.**

Maya Angelou

